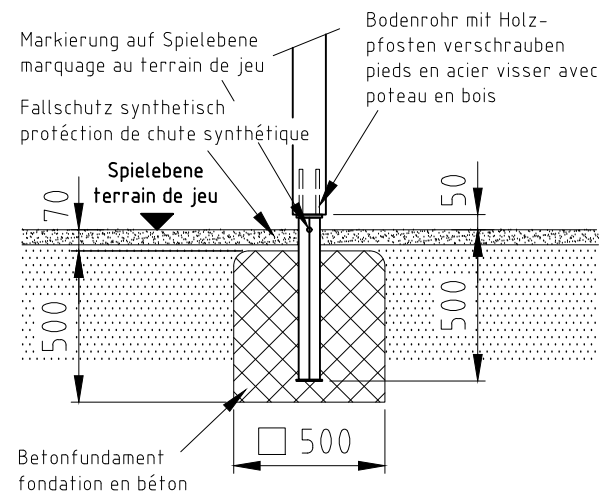
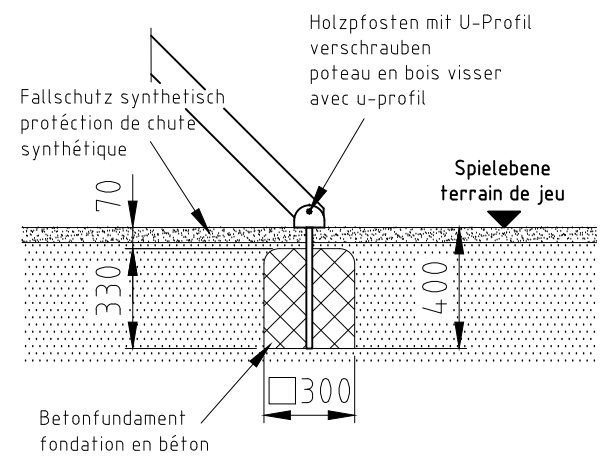


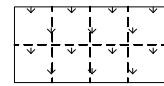
Fundament F01



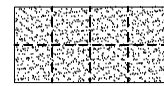
Fundament F03



H= Fallhöhe
H= espace de chute

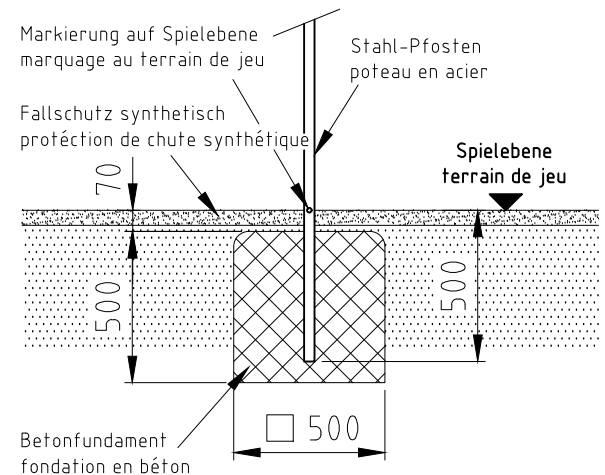


Aufprallfläche 0-100cm
espace de chute 0-100cm

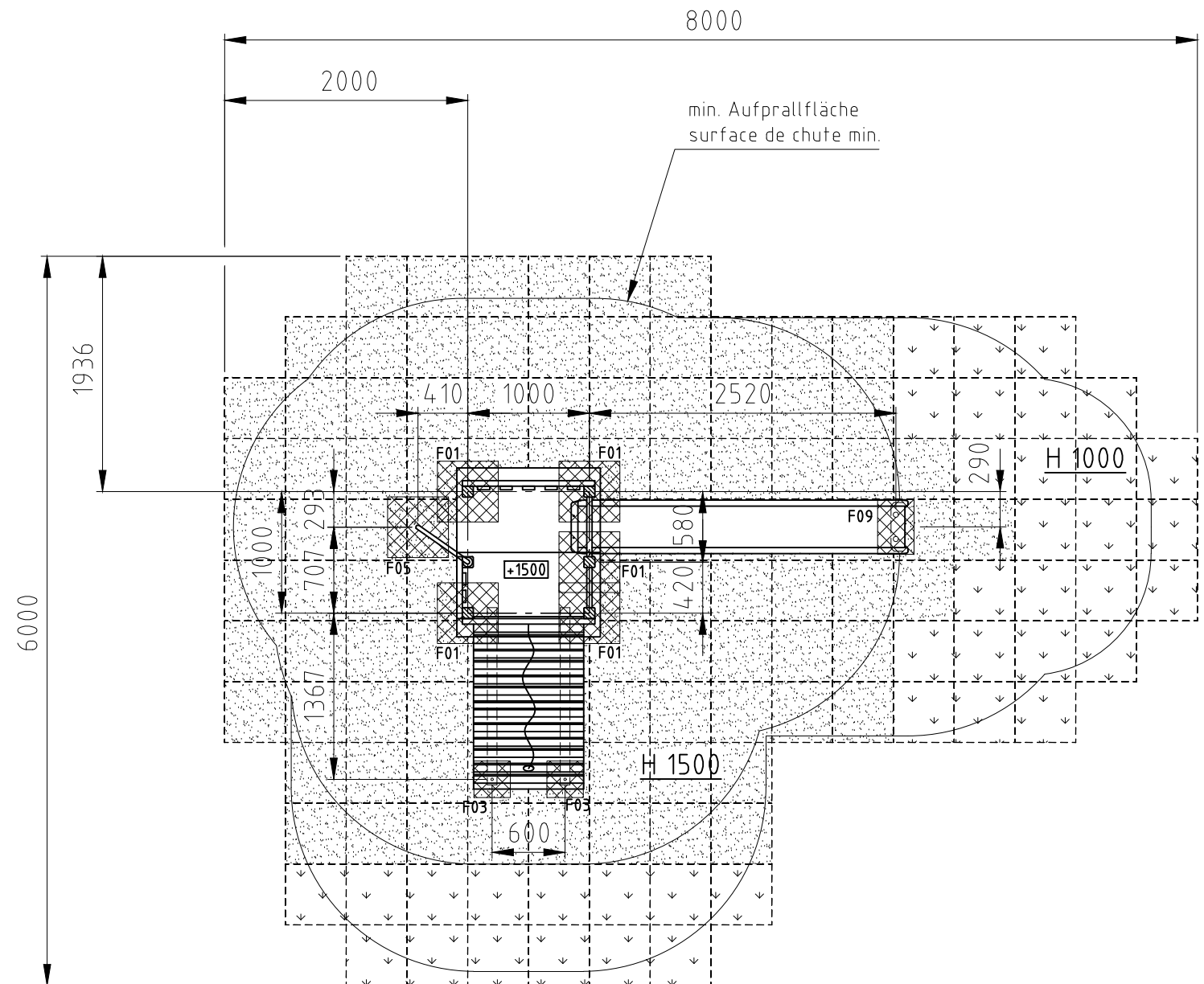
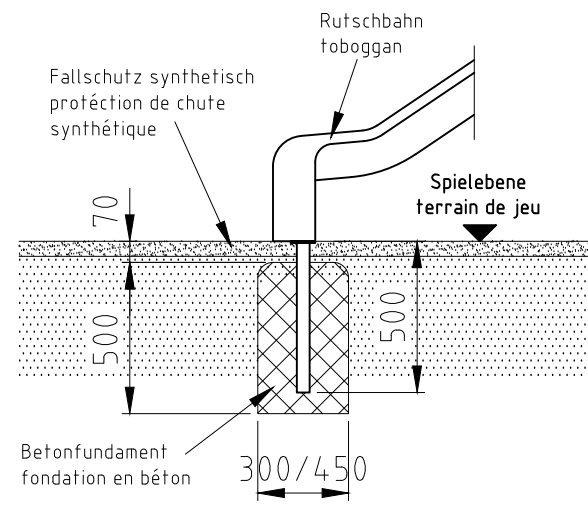


Aufprallfläche 0-180cm
espace de chute 0-180cm

Fundament F05



Fundament F09



Norm: SN EN 1176-1: 2018 SN EN 1177: 2018	Datum	Name	Objekt: 54260-001-s Spielturm-Kombination
	Gez	js	
Sachbearbeiter			Auftraggeber: synthetischer Fallschutz / protection de chute synthétique
Spiel- und Sportgeräte AG CH-6212 St. Erhard Tel 041 925 14 00 info@buerli.swiss			Fundation
			M: 1:50 Layout: 1 A3
© by www.buerli.swiss		Offerte/Auftrag:	Zeichn-Nr.: 025176.dwg Index: B