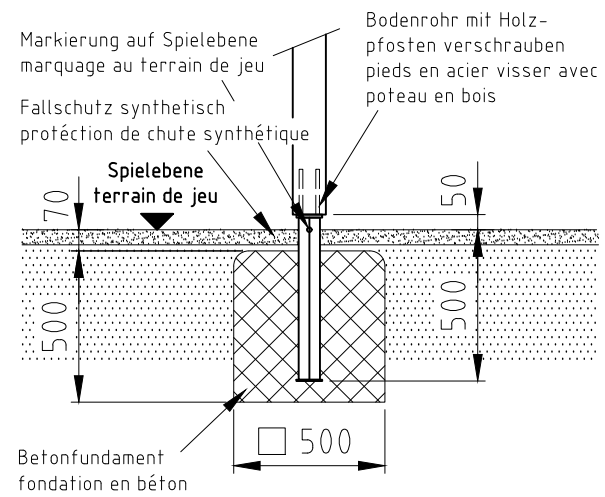
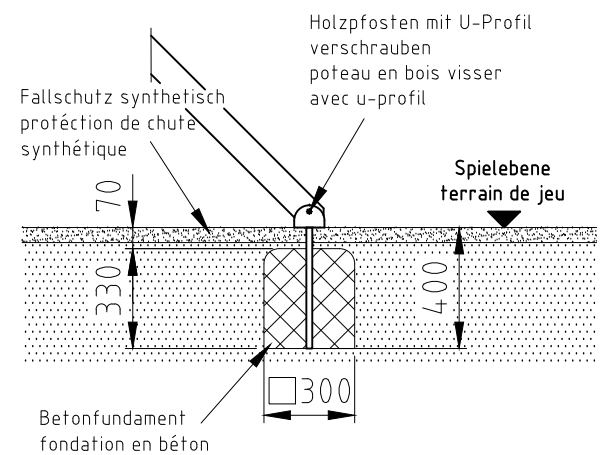


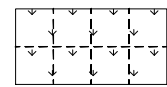
Fundament F01



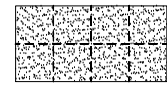
Fundament F03



H= Fallhöhe
H= espace de chute

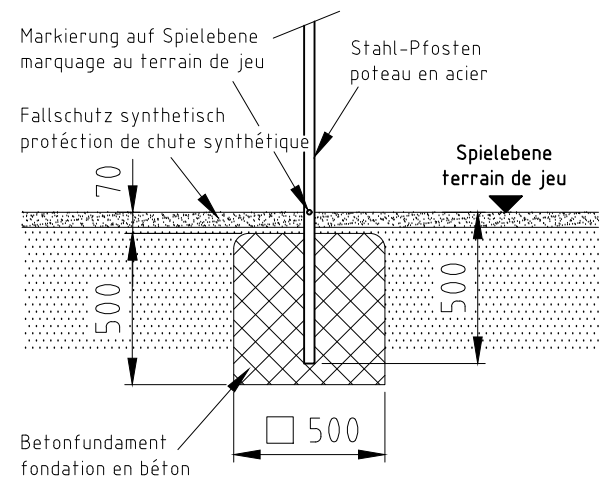


Aufprallfläche 0-100cm
espace de chute 0-100cm

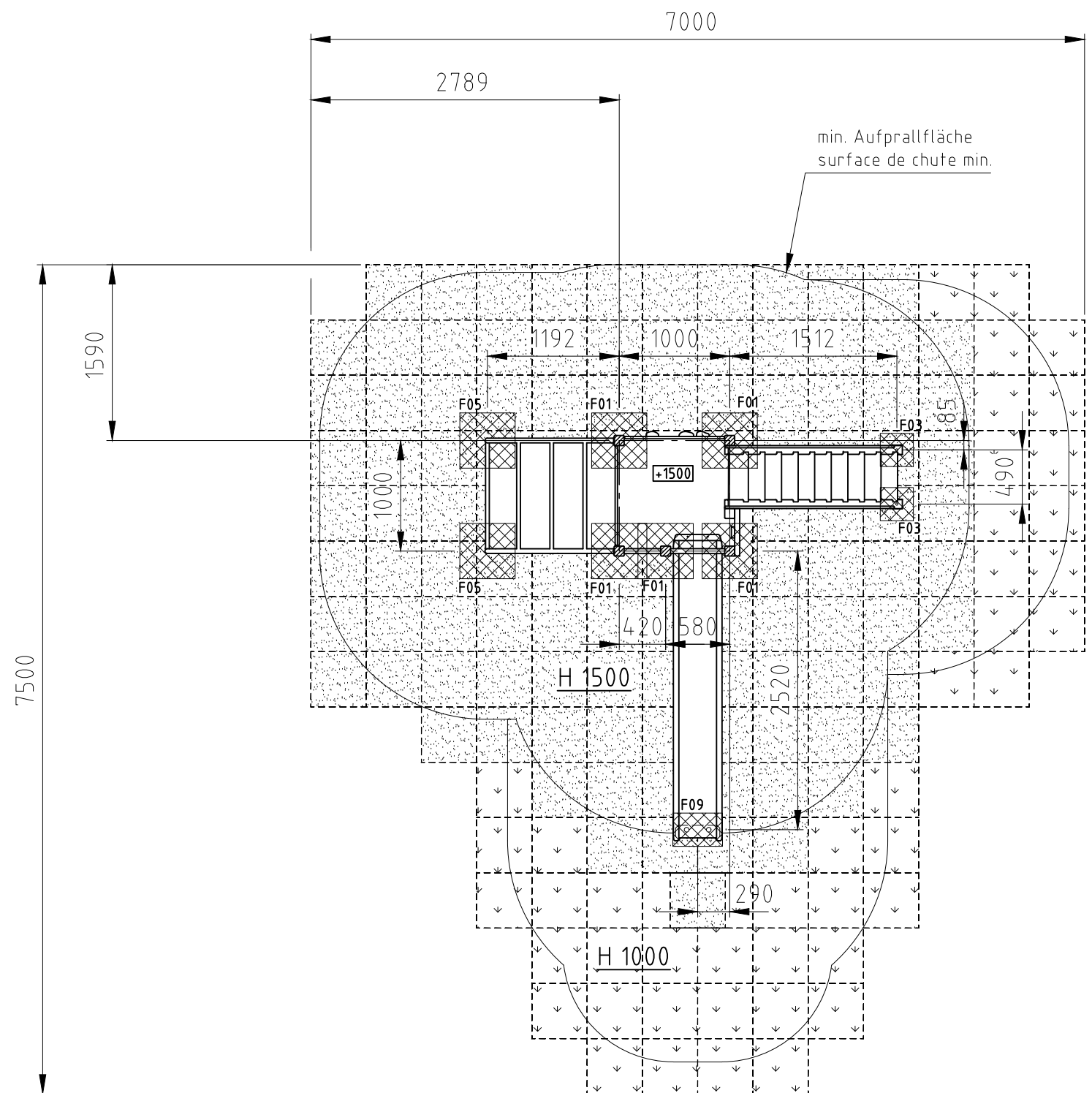
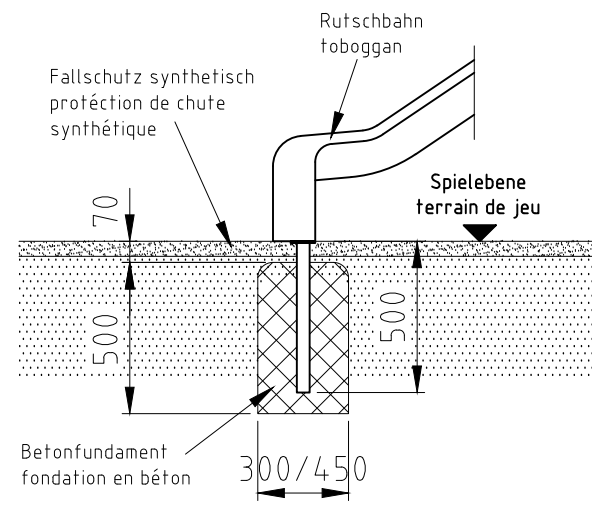


Aufprallfläche 0-180cm
espace de chute 0-180cm

Fundament F05



Fundament F09



Norm: SN EN 1176-1: 2018 SN EN 1177: 2018	Datum	Name	Objekt:	Fundation
	Gez	sa	54270-001-s Spielturm-Kombination	
	Sachbearbeiter		Auftraggeber:	M: 1:50
buerli Spiel- und Sportgeräte AG CH-6212 St. Erhard Tel 041 925 14 00 info@buerli.swiss			synthetischer Fallschutz / protection de chute synthétique	
			Offerte/Auftrag:	Zeichn.-Nr.: 018974.dwg